



A FIRST LOOK AT THE NEXT EXCITING
RELEASE OF AWARD-WINNING SOFTWARE
FROM OPEN SYSTEMS, INC.

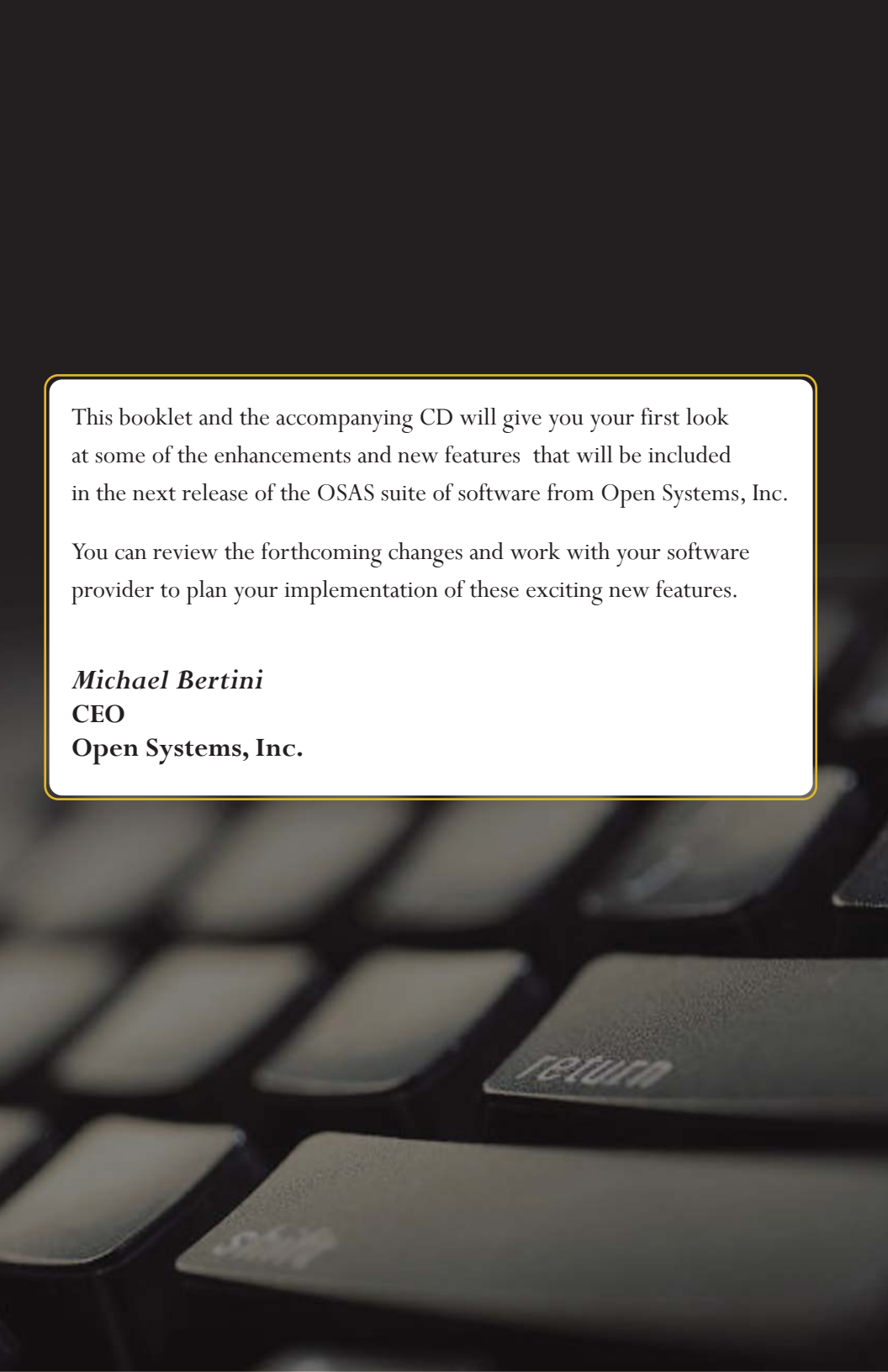


OSAS[®] v7.5
OPEN SYSTEMS[®] Accounting Software



OSAS[®] v7.5
OPEN SYSTEMS[®] Accounting Software

Information presented here describes the intended features of OSAS version 7.5 as of March 2007. Future features and functions are subject to change, and there is no guarantee that a particular function described in this document will be present in subsequent versions of OSAS.



This booklet and the accompanying CD will give you your first look at some of the enhancements and new features that will be included in the next release of the OSAS suite of software from Open Systems, Inc.

You can review the forthcoming changes and work with your software provider to plan your implementation of these exciting new features.

Michael Bertini
CEO
Open Systems, Inc.

OSAS v7.5 Features List

Accounts Payable

- Drill-down capabilities from General Ledger
- Multiple methods of payment
- Optionally stop posting of checks unless they are printed
- Option to default Vendor ID to the next transaction in AP and PO
- Customizable label printing for customers and vendors
- Inactive flag for vendors
- Warnings for special characters in 1099 forms
- Summary version of the Vendor Detail List
- Canadian check standards
- Recalculate the amount due at periodic maintenance
- Default sales and purchase Batch IDs in Defaults function
- GL Year and Period in History Files
- GL Year in Batch ID (AP entry)
- ACH/Acct Number in vendors
- Bank Account Information Inquiry with Banking module
- Create positive pay files with Banking module

Accounts Receivable

- Drill-down capabilities from General Ledger
- Email statements to customers
- Email AR invoices to customers
- Encrypted credit card numbers
- Customizable label printing for customers and vendors
- Maintain E-Mail address using F6 customer maintenance
- Inactive flag for customers
- GL Year and Period in History Files
- Default Sales and Purchase Batch IDs in Defaults function
- ACH/Acct Number for customers with Banking module
- Allow direct debit cash receipts with Banking module
- Allow wire transfer cash receipts with Banking module
- Bank Account Information Inquiry with Banking module

OSAS v7.5 Features List

Banking

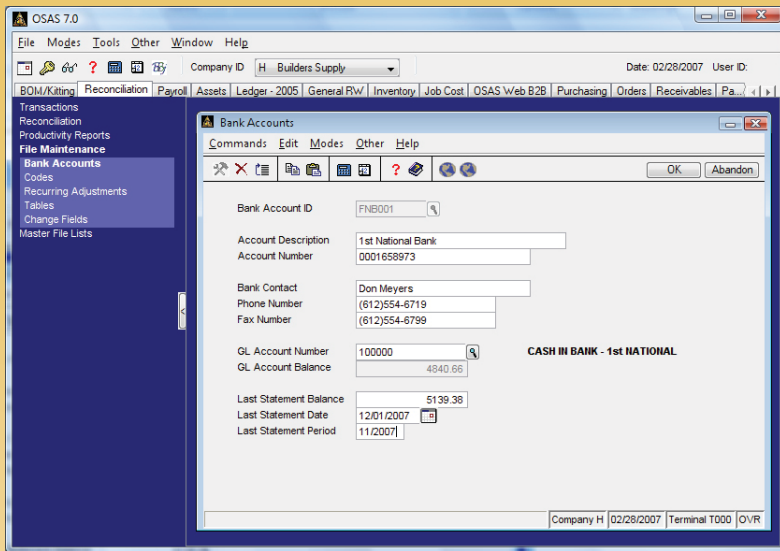
- File-based reconciliation in BR
- Vouchers/ACH file
- Account Information inquiry for AR, AP, PA, BR
- Limit AR Payment types
- ACH/Acct Number in Vendors, Customers, Employees
- Payment receipt/acknowledgement
- ACH File Journal and Creation
- Create Positive Pay files

Bill of Materials/Kitting

- Drill-down capabilities from General Ledger

Bank Reconciliation

- Drill-down capabilities from General Ledger



OSAS v7.5 Features List

Direct Deposit

- Void direct deposit
- Optionally stop posting of checks and vouchers unless they are printed

Fixed Assets

- Drill-down capabilities from General Ledger

General Ledger

- Drill-down capabilities from General Ledger
- Use prior year files in F2 Inquiry when applicable
- Inactive flag for GL accounts

Inventory

- Default units of measure for purchases and sales in Inventory items
- Drill-down capabilities from General Ledger
- Consider unit of measure in Price Change function by flat dollar amount
- Maintain base and list price using F6 item maintenance

OSAS 7.0

File Modes Tools Other Window Help

Company ID H Builders Supply Date: 02/28/2007 User ID

Assets Ledger - 2006 General Fw Inventory Job Cost OSAS Web B2B Purchasing Orders Receivables Payables Payroll Resource Mgr Favori

Information Inquiry
Daily Work
Reorder Processing
Reports
Analysis Reports
Productivity Rpts-Inventory
Productivity Rpts-Lot/Serial
Periodic Processing
Physical Inventory
File Maintenance
Items
Item Locations
Locations
Copy Items to Locations
Price Structures
Promotional Pricing
Tables
Change Fields
Code Maintenance
Master File Lists
Master Codes List

IN - Item Locations

Commands Edit Modes Other Scroll Commands Inventory Lookups Help

Item ID 901
Description Refrigerator - White Units EA

Loc	On Hand	Committed	In Use	Available	On Order
CA0001	1.0000	.0000	.0000	1.0000	.0000
MD0001	.0000	.0000	.0000	.0000	.0000
MN0001	10.0000	.0000	.0000	10.0000	.0000
TX0001	9.0000	.0000	.0000	9.0000	.0000

Do You Want to Maintain:

Location Information?

Price Information?

Cost Information?

Vendor Information?

Bin Information?

Lot Numbers?

Serial Numbers?

Enter=edit Append Item Goto Units

Company H 02/28/2007 Terminal T000 OVR

OSAS v7.5 Features List

Job Cost

- Drill-down capabilities from General Ledger

Payroll

- Drill-down capabilities from General Ledger
- Encrypted social security numbers
- Multiple-year Payroll files
- Optionally stop posting of checks unless they are printed
- State from/thru in W-2 Printing
- Rebuild payroll formulas after file conversion
- W-3 Total form printing in W-2 function
- Inactive flag for employees
- Use prior year files in F2 Inquiry when applicable
- Dynamic description and number sizing in W-2 Form Box 14
- Batching in time ticket and miscellaneous deduction entry
- GL Year and Period in History Files
- ACH/Acct Number in employees
- Bank Account Information Inquiry with Banking module
- Create positive pay files with Banking module

The screenshot displays the OSAS 7.0 Payroll Transactions interface. The main window is titled 'PA - Payroll Transactions' and contains an 'Enter Transactions' form. The form is populated with the following data:

Employee ID	Tax Group	Date	Job	Class	Phase	Sequence No	Dept	Cost Code	Pieces	Rate	Earn Code	Note	Hours	Rate	Amount
ST0001	MN	02/28/2007	100002	SHP	C	2	100	500	1	8.950	REG	Regular Pay	88.000	8.950	716.00

Deduction	Note	Hours	Amount
1	Medical Ins	80.000	86.24



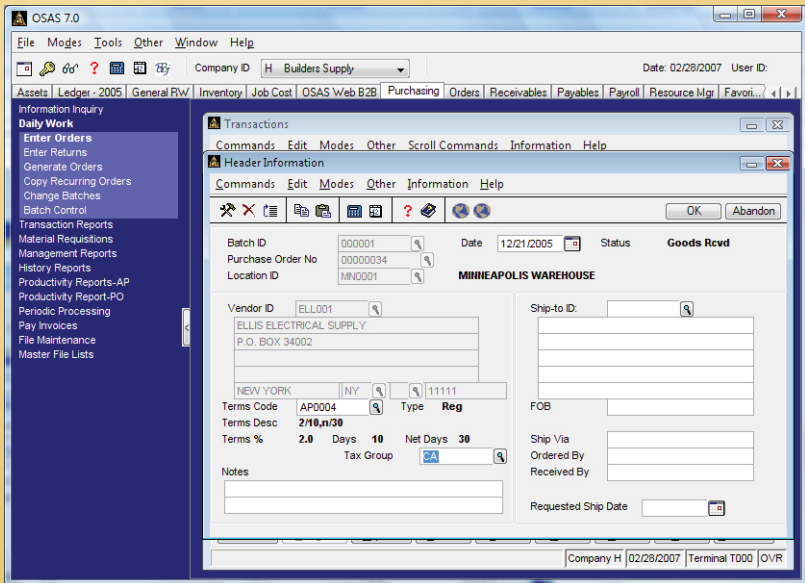
OSAS v7.5 Features List

Landed Cost

- Apply and track indirect costs based on purchase order quantities, dollars or weight.
- Calculate item costs using up to five costs or levels of compound calculations.

Purchase Order

- Drill-down capabilities from General Ledger
- Option to default Vendor ID to the next transaction in AP and PO
- Landed Cost
- Email purchase orders to vendors
- Blank batch ID when looking for orders in order entry
- Multiple methods of payment
- GL Year and Period in History Files
- Default Sales and Purchase Batch IDs in Defaults function
- Default prepayment amounts to invoices automatically as invoices are entered
- GL year in batch ID (PO entry)
- Canadian check standards



OSAS v7.5 Features List

Resource Manager

- Enhanced capabilities for screen resizing in graphical environments
- Invalid GL accounts audit report
- Document description and file name in the Documents display
- File-name extensions in Print Manager functions
- User email address on product suggestion form
- Pull-down selection of alternate sorts in graphical F2 windows
- Encrypted email password
- Display dates in both Julian and human-readable date formats in View File Contents
- Defaults for report output by workstation (printer, print preview, etc.)
- Customizable label printing for customers and vendors
- Prior-year changes in Change Fields function
- Larger printer device names in RMPC file
- Calculated result from GUI calculator returned to the input field
- Default Sales and Purchase Batch IDs in Defaults function
- Functions with multiple windows retain relative position for hidden or new windows
- Mouse wheel navigation in windows (graphical mode)
- Word-wrap capabilities in additional descriptions throughout OSAS
- Enhanced user tracking from menus
- Forced user IDs; xxVER and xxVFY key off user IDs
- Master File Lists menu is split into System File Lists and Master File Lists menus
- GENEMAIL.PUB accommodates sending of invoices, POs, and statements
- Support for company-specific table changes in Change Fields function



OSAS v7.5 Features List

Contractors' Job Cost

- Drill-down capabilities from General Ledger

Sales Order

- Drill-down capabilities from General Ledger
- Email SO invoices to customers
- Alert to PO number duplication in order entry
- Option to move orders to a different batch by status
- GL Year and Period in History Files
- Default Sales and Purchase Batch IDs in Defaults function
- Direct debit cash receipts with Banking module
- Wire transfer cash receipts with Banking module

The screenshot displays the OSAS 7.0 software interface. The main window is titled "Orders" and shows an order entry form. The form includes fields for Batch ID (000002), Our Order No (00000046), Date (05/14/2007), Status (Verified), and Loc ID (MND001). The order is for ACE BUILDERS at 1588 SE 31ST STREET. The form also includes a table for sales representatives and terms, and a section for shipping information including ship to address, ship method (FEDP), and ship via (Federal Exp Priority).

SALES REP	COMPANY	PERCENT	STATUS
Sales Rep 1	GPD	Percent 75.0	
Sales Rep 2	PRT	Percent 25.0	

TERMS	TYPE	REG
Terms Code	2PCT	
Terms Desc	2/10,n/30	
Terms%	2.0 Days 10	Net Days 30

SHIP TO	SHIP METHOD	SHIP VIA
Ace Builders Warehouse 01 4398 Valley View Place	FEDP	Federal Exp Priority



OSAS[®] v7.5
OPEN SYSTEMS[®] Accounting Software



OPEN
SYSTEMS INC.

4301 Dean Lakes Blvd.
Shakopee, MN 55379
952-403-5700
Fax 952-496-2495
www.osas.com